



TASARIM
MANKEN



Tasarım Manken

to every size



*Every perfect tailor mannequin,
prepared in desired dimensions,
bears the signature of
Tasarım Manken.*

CONTACT

0212 230 6651

0536 588 8518

tasarimmanken@gmail.com



- ✓ Mannequins in sizes 34 - 36 - 38 - 40 - 42 - 44 - 46 - 48
- ✓ Custom sizes
- ✓ Sleeved or Sleeveless options
- ✓ Different material options
- ✓ The interior is polyester
- ✓ Covered with a layer of fibre, lining and fabric.
- ✓ Adjustable height
- ✓ Suitable for needle prickling

CONTACT



0212 230 6651



0536 588 8518



www.tasarimmanken.com

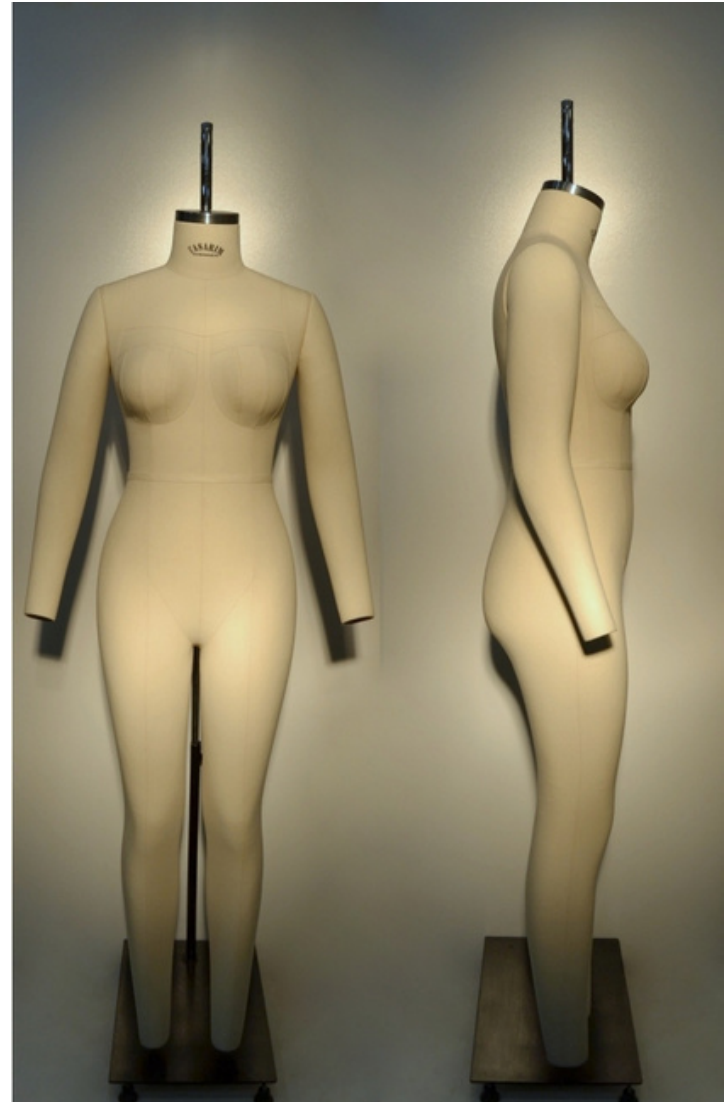


tasarimmanken@gmail.com

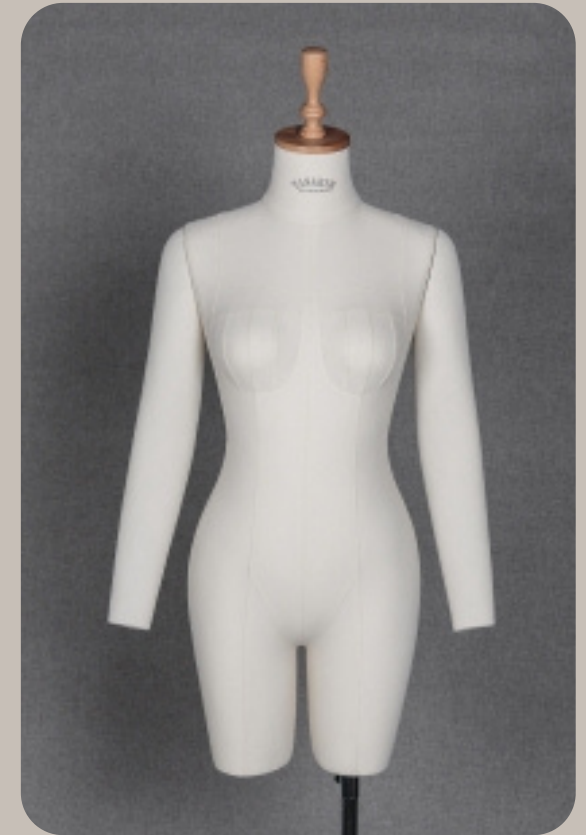




Full Body Professional Mannequin



It is prepared exactly in
human anatomy.



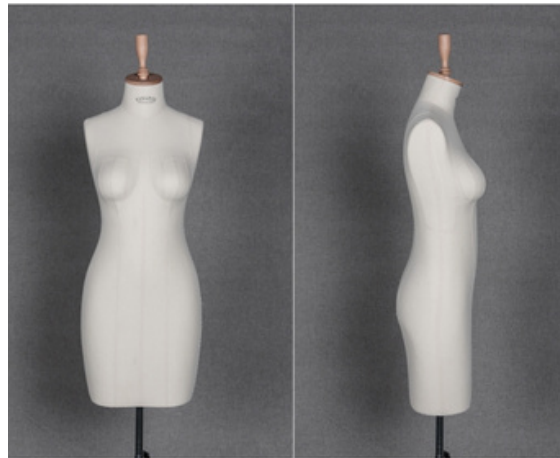
**Full
Professional
Half Leg
Mannequin**



003



**Full
Professional
Z Model
Mannequin**





004.



**Male
Professional
Mannequin**



005



**Large Size
Professional
Mannequin**





006



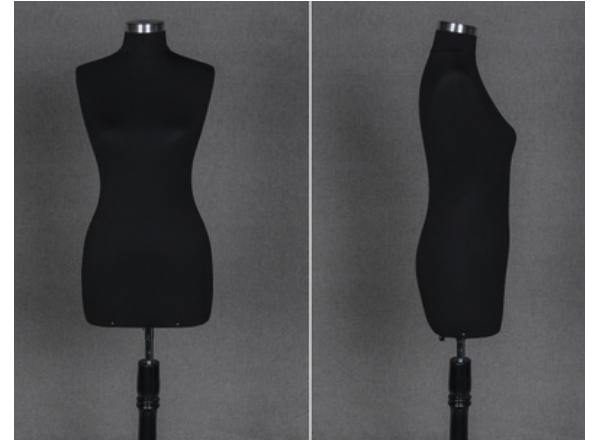
British Model Mannequin



007



**Standard
Mannequin**





008



**Large Size
Standard
Mannequin**



009



**Standard Male
Mannequin**





✓ Design with different wooden arm & leg colors



Wooden Sleeves Visual Mannequin (Upholstery)



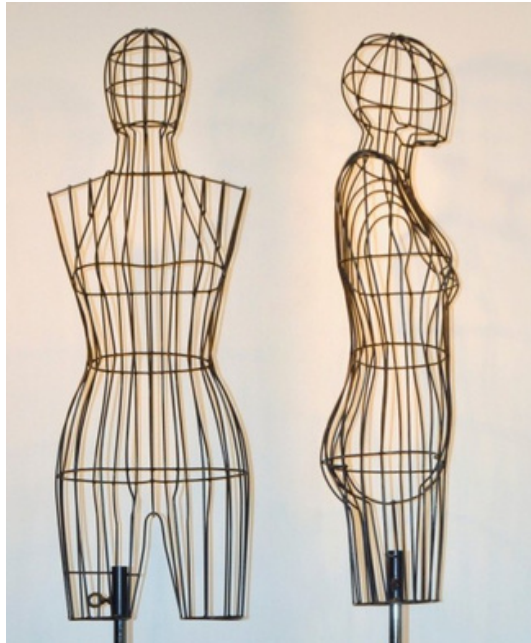
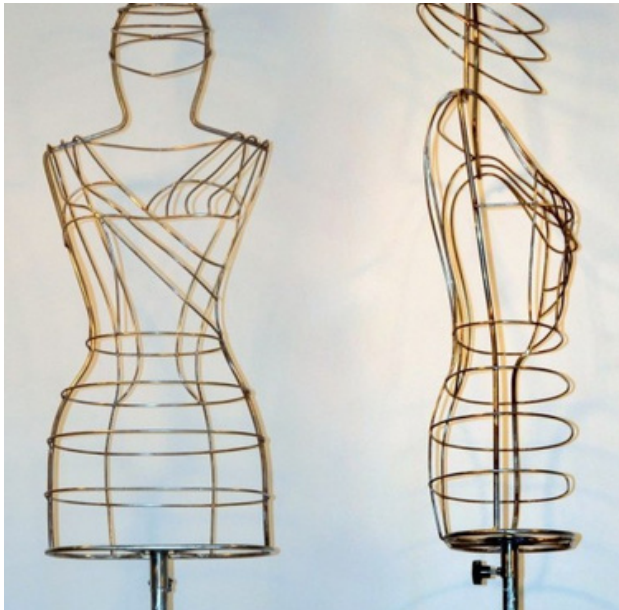
011



Male Wooden Sleeveless Visual Mannequin



✓ Design with different wooden arm & leg colors



012



Wrought Iron Visual Mannequin



013



**Rope Design
Visual
Mannequin**





014.



**Sack Design
Visual
Mannequin**



015

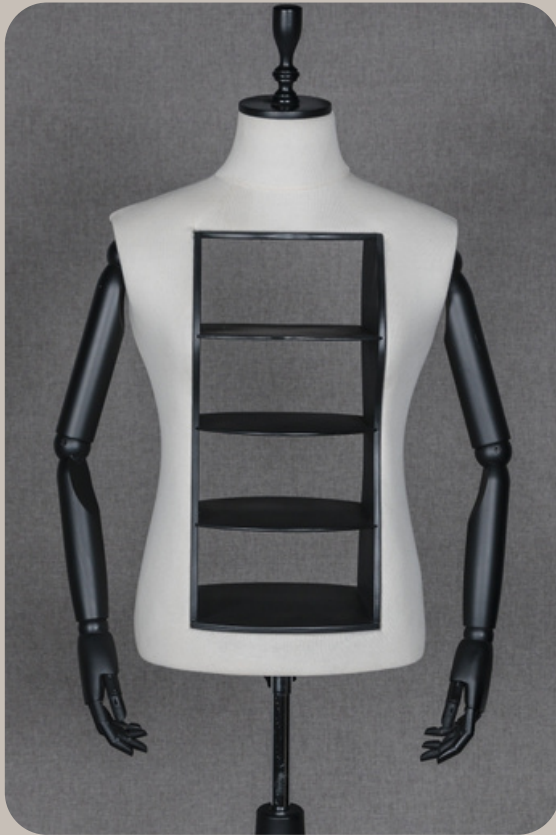


**Pregnant Tailor
Mannequin**





016



**Visual
Mannequin with
Shelves**



017



**Jeans Fabric
Design Visual
Mannequin**



018



**Velvet Visual
Mannequin**



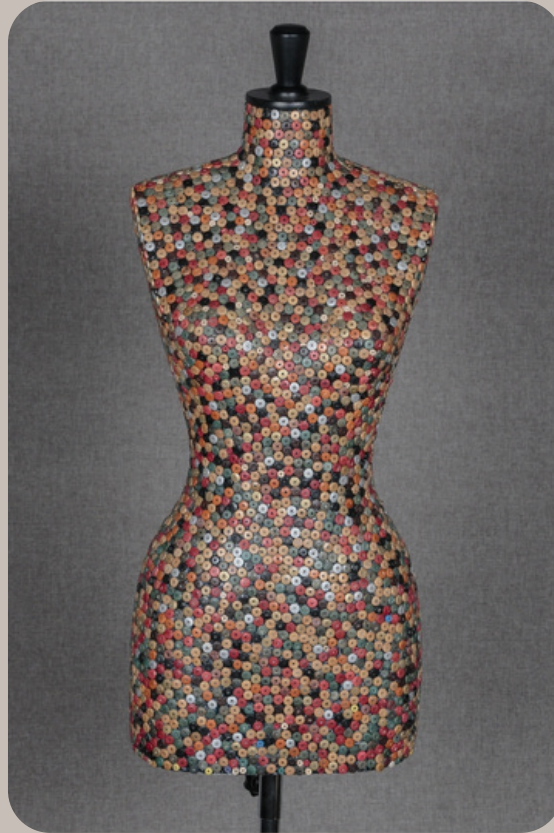
019



**Madame Coco
Visual
Mannequin**



020



**Colorful Bead
Design Visual
Mannequin**



021



**Leafy Design
Visual
Mannequin**



022



**Ghost Male
Visual
Mannequin**



023



**Ghost Female
Visual
Mannequin**



024



**Transparent
Visual
Mannequin**



025



**Mannequin
Head Designs**



026



**Mannequin Foot
Models**



027



**Headed Linen
Fabric Visual
Mannequin**



028



**Miniature
Mannequins
(50 and 25
groups)**

- ✓ Mannequins in sizes 34 - 36 - 38 - 40 - 42 - 44 - 46 - 48
- ✓ Custom sizes
- ✓ Sleeved or Sleeveless options
- ✓ Different material options
- ✓ The interior is polyester
- ✓ Covered with a layer of fibre, lining and fabric.
- ✓ Adjustable height
- ✓ Suitable for needle prickling

CONTACT



0212 230 6651



0536 588 8518



www.tasarimmanken.com



tasarimmanken@gmail.com



[tasarimmanken](https://www.instagram.com/tasarimmanken)

